

Longhorn Junction

Approximately 231 +/- Acres

Georgetown, TX

All Utilities Onsite

- 5 Fiber Optic Lines
- Dual Power Grids
Up to 400 MW
- 12" Gas Line
- 12" & 18"
Waterlines
- 10" & 18"
Wastewater Lines

All Frontage Lots:

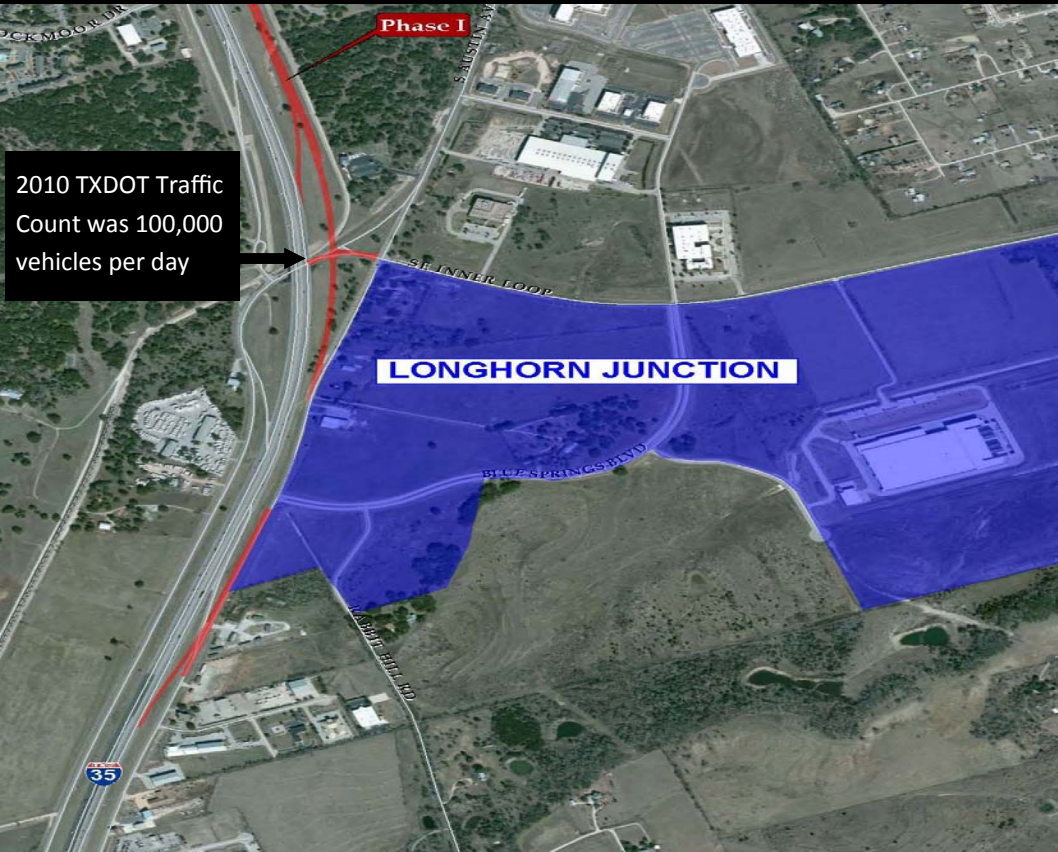
- Approx. 3,035 Ft
of IH-35 N
Frontage
- Approx. 5,964 Ft
of Inner Loop Rd
Frontage
- Approx. 1,567 Ft
of FM 1460 / AW
Grimes Frontage
- Approx. 3,542 Ft
of Blue Springs Blvd



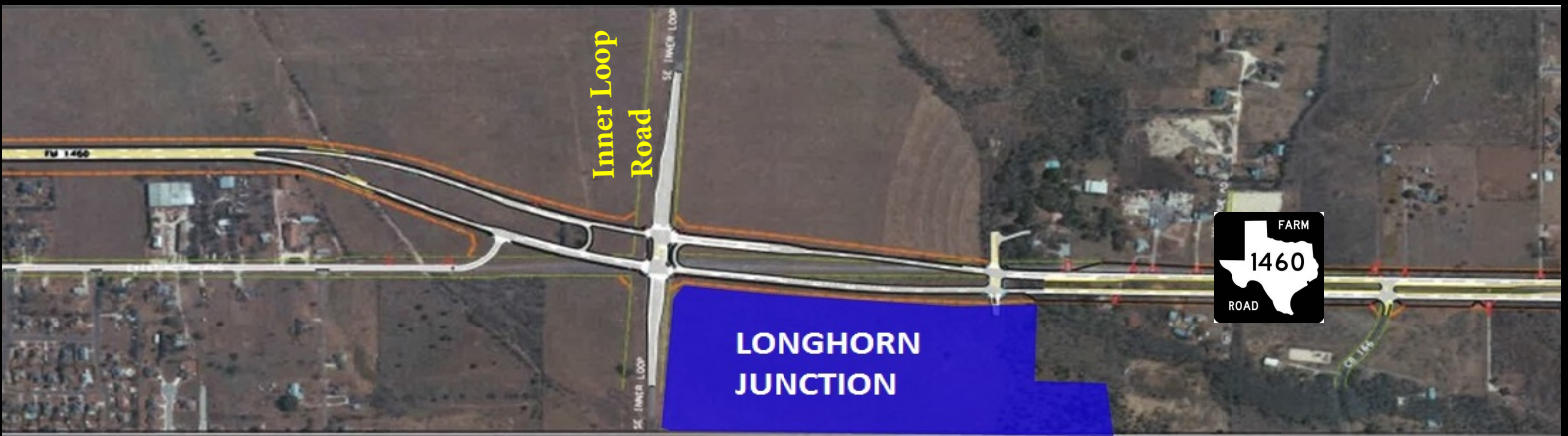
Longhorn Junction

Approximately 231 +/- Acres

Georgetown, TX



The new frontage road, exit and entrance was completed in Fall 2015. There is now an exit ramp directly to Longhorn Junction from IH-35 and an entrance ramp to IH-35 from Longhorn Junction. The frontage connects Longhorn Junction to SH29.



Spring of 2016, the City of Georgetown and TXDOT broke ground on the expansion of FM 1460 into a 4 lane divided road and is expected to be completed in late 2016/early 2017.

For More Information:

<http://roadbond.wilco.org/Projects/Precincts/Precinct3/P262FM1460North/tabid/5112/Default.aspx>